

Project		Date	
Part		Type	



### About the BLCO

| The BLCO is a surface mount luminaire designed for task lighting and cove lighting applications.

### Specifications

Supported Voltage	120-277V, 347V, 120-347V
Available Sizes	4'
Lifetime	L70 of 99,000+ hours, L90 of 30,000+ hours
Lumens	1' 1,125L (1125lm) - 8' 23L (23000lm)
CCT	2700K, 3000K, 3500K, 4000K, 5000K, 6500K
CRI	80+ standard, 90+ and 95+ available
Dimming	0-10V Standard
Mounting	Surface mount

### Approvals

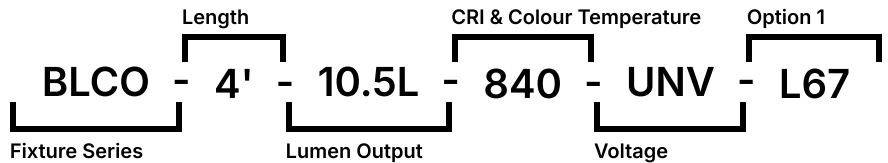
| - Dry and Damp Environment Rated

### Warranty

| 5 Year Comprehensive, 10 Year LED

## Ordering Information

Fill in the fields below with your product selections. If you need help with this section, [contact your local sales professional](#).



1	2	3	4	5	6				
BLCO									
Series	Length	Lumen Output		CRI	CCT	Voltage			
BLCO	2'	4' 2.5L	2500lm	4' 5.5L	5500lm	8 80	27 2700K	UNV	120-
	4'	4' 3.5L	3500lm	4' 6.5L	6500lm	9 90+	30 3000K		277V
	8'	4' 4.5L	4500lm			1 95+	35 3500K	347	347V
							40 4000K	UN3	120-
							50 5000K		347V
							65 6500K		
7									

## Options

### Lenses

L0	No Lens
L18	Frosted Acrylic Lens
L62	Frosted Asymmetric Acrylic Lens

### Cords

W3xx	White 16/3 (Specify Length)
W4xx	Black 16/3 (Specify Length)
W59xx	White 18/5 (Specify Length)
W***	Other Options Available*

Key.	Cord Length.	Key	Cord Length
6	6FT	15	15FT
10	10FT	20	20FT

### Dimming

Ex. W406 would be 16/3 Black, 6FT

B11	0-10V Dimming Leads
B12	Line Voltage Dimming
B27	Dim-to-off Driver

### Controls

WC10*	Encelium Wireless Controls
WC18*	NX Wireless Controls
WC19*	Avi-on Wireless Controls
WC22*	JDRF Wireless Controls

### Modular Wiring

W27XYZC	Modular Power Cable (WAGO)
W22XY	Molex Row Mounting Wiring

### Emergency Driver

B24	UL924 20W Battery Back-up
F8	UL924 Emergency Relay

### Packaging

BLANK	Individually Boxed on Pallets
P0	Bulk Packaging
P**	Other Options Available*


### Warranty

CL7	10-Year Comprehensive Warranty Upgrade
-----	--

## Documentation and Resources

All files and resources are available on our website for download. Files and resources are also embedded as links in this document, listed below. Additional files may be available upon request.




Please contact your local sales agent [here](#) or contact [sales@bjtake.com](mailto:sales@bjtake.com) for more information.

 [BLCO Specification Sheet, 2025](#)

 [BLCO - Photometry.zip](#)

## Certifications and Listings

Certifications that apply to this fixture and its possible configurations are listed here. More information available upon request.

Icon	Description
	Wireless Controls Available
	90 and 95+ CRI Options Available
	120-347V(UN3) Available

## Usage Applications

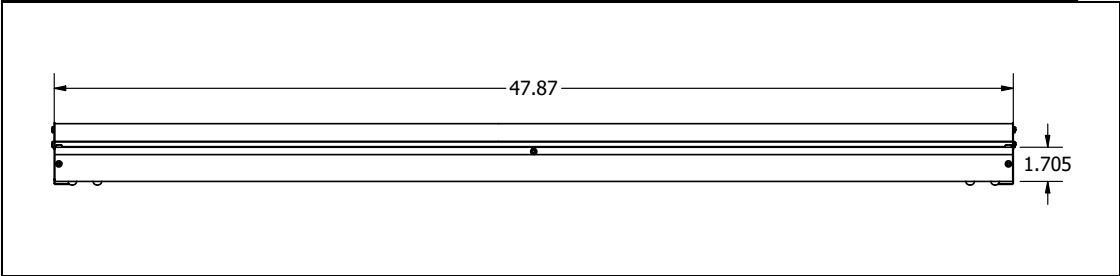
This fixture can be used in a variety of applications, and is ideal for the following:

Usage Application
Task Lighting
Shopping Centers
Hotels
Offices

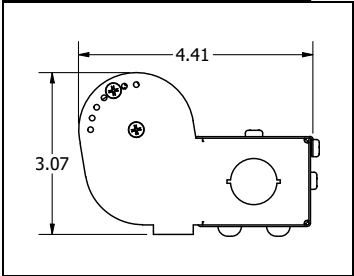
## Warranty Statement

BJ Take products are tested and/or inspected prior to being packaged for shipment and are guaranteed from the day the product is shipped for a period of ten-year LED chip warranty and a five-year comprehensive component warranty. This can be upgraded to a ten-year comprehensive warranty on request.

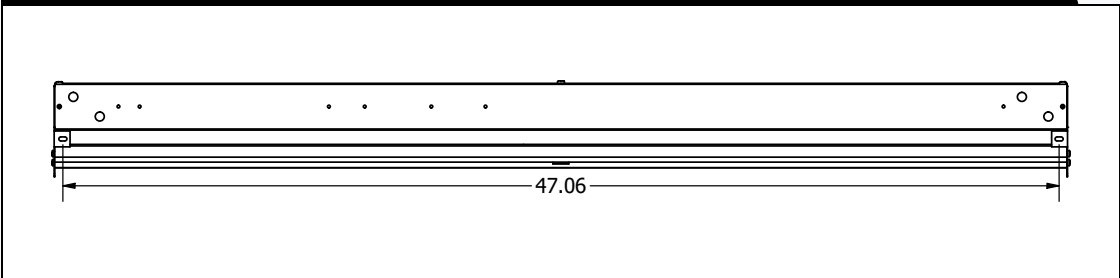
BLCO Side (end to end)



BLCO End



BLCO Side (mounting width)



BLCO Wattage

Size	Lumen Output	Actual Lumen Output	Fixture Wattage	Lumens per Watt
4'	2.5L	2549	16.5	154.9
4'	3.5L	3588	23.8	150.8
4'	4.5L	4599	30.9	146.9
4'	5.5L	5630	39.4	143.1
4'	6.5L	6616	47.9	138.2

\* Drawings aren't to scale  
\* Standard tolerances apply  
\* Specifications may change without notice

#### Gallery Information

Below you will find images of relevant products and configurations for the BLCO.

